

LWL-Universitätsklinikum Bochum  
im LWL-PsychiatrieVerbund Westfalen

Klinik für Psychiatrie, Psychotherapie  
und Präventivmedizin

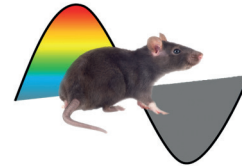
UK RUB UNIVERSITÄTSKLINIKUM DER  
RUHR-UNIVERSITÄT BOCHUM

Invitation to the **Symposium**

# *Animal Models of Affective Disorders*

## Development, Modifications, Treatment

Ruhr-University Bochum, Convention Centre, March 29, 2019



**LWL**  
Für die Menschen.  
Für Westfalen-Lippe.

How can animal models help to understand affective disorders? Learn more about development of affective disorders, pharmacological treatment validation, and modifications. Take the chance to discuss recent findings and different models with leading experts.

Register now at [www.freundlab.com/symposium](http://www.freundlab.com/symposium)  
Present your research with a Poster! Submit your abstract until March 01, 2019

## Speakers

### **Jennifer Honeycutt, PhD**

Northeastern University, Boston, USA

### **Luisa Pinto, PhD**

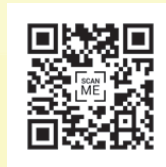
Life and Health Science Research Institute, (ICVS), Braga, Portugal

### **Prof. Colleen McClung**

University of Pittsburgh School of Medicine, USA

### **Prof. Sophie Erhardt**

Karolinska Institutet, Stockholm, Schweden



*Sponsored by*

